

Low Power Linear Hall Sensor

XL49

Features

- Wide Operating Voltage Range: 2.7V~8V
- Low Operation Current : 1.2mA
- Zero-point (No magnetic field) output voltage: 2.05V
- Linearity $\pm 4\%$
- Sensitivity: 2.2mV/Gs@VDD=3.3V
- Low noise output without external capacitor filtering
- Temperature Grade 2: -40°C to 105°C
Ambient Operating Temperature Range
- Device HBM ESD Classification Level Class2
- SOT23-3 package

Applications

- Hall Effect Keyboard
- Game Handle
- Speed Control Handlebar
- Liquid Level Detection

General Description

The XL49 is a linear Hall-effect sensor specifically engineered for magnetic-axis keyboards, featuring low power consumption, wide operating voltage, and extended temperature range, with an output voltage that varies proportionally to the supply voltage, and proportional to the strength of the magnetic field it senses. The XL49's output voltage without magnetic field defaults to 2.05V, the chip's typical operating voltage is 3.3V, with low operation current. The operating temperature range supports -40°C ~ 105°C . It is widely used in Consumer Electronics and Industrial Control applications.

The XL49 integrates high precision current source, temperature compensation module, Hall array, amplifier, driver module and other circuit modules, which provides high linearity and strong immunity to electromagnetic interference over the full voltage range and full temperature range.

Typical application schematic

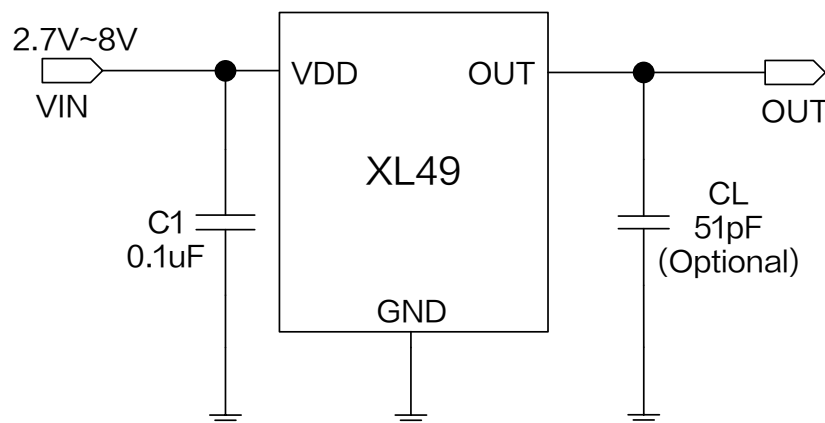


Figure1. XL49 Typical application schematic

Low Power Linear Hall Sensor

XL49

Pin Configurations

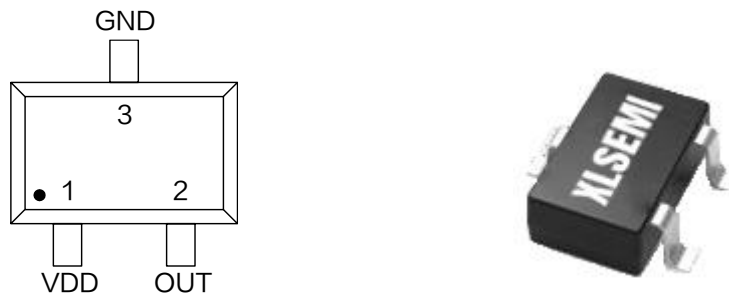


Figure2. Pin Configuration of XL49

Table 1 Pin Description

| Pin Number | Pin Name | Description |
|------------|----------|---|
| 1 | VDD | Supply Voltage Input Pin. XL49 operates from 2.7V to 8V DC voltage. |
| 2 | OUT | Output Pin. |
| 3 | GND | Ground pin. |

Ordering Information

| Order Information | Marking ID | Package Type | Eco Plan | Packing Type Supplied As |
|-------------------|------------|--------------|-----------|--------------------------|
| XL49 | XL49 | SOT23-3 | RoHS & HF | 3000 Units Per Reel |

Low Power Linear Hall Sensor

XL49

Function Block

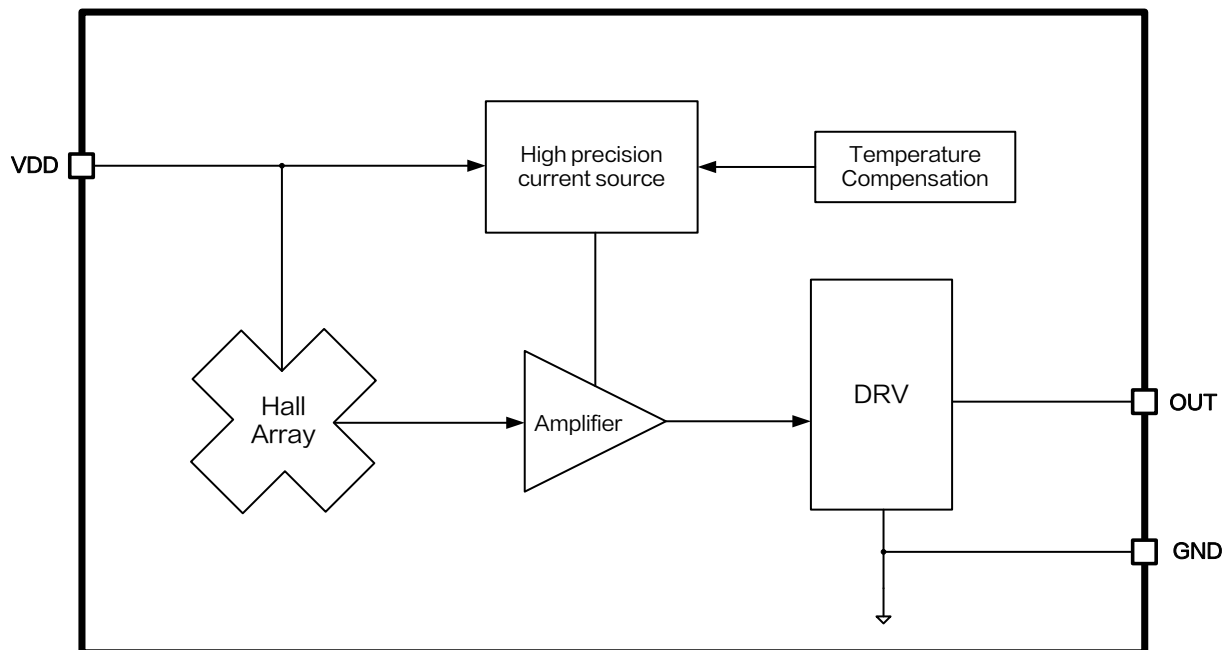


Figure3. Function Block Diagram of XL49

Absolute Maximum Ratings (Note1)

| Parameter | Symbol | Value | Unit |
|--|------------|-----------|------|
| Input Pin Voltage | V_{DD} | -0.3 ~ 25 | V |
| Output Pin Voltage | V_{OUT} | -0.3 ~ 25 | V |
| Output Current | I_{OUT} | 2 | mA |
| Thermal Resistance (SOT23-3) (Junction to Ambient, No Heatsink, Free Air) | R_{JA} | 200 | °C/W |
| Operating Temperature | T_A | -40 ~ 105 | °C |
| Operating Junction Temperature | T_J | -40 ~ 150 | °C |
| Storage Temperature | T_{STG} | -65 ~ 150 | °C |
| Lead Temperature (Soldering, 10 sec) | T_{LEAD} | 260 | °C |
| ESD (HBM) | - | ≥2500 | V |

Note1: Stresses greater than those listed under Maximum Ratings may cause permanent damage to the device. This is a stress rating only and functional operation of the device at these or any other conditions above those indicated in the operation is not implied. Exposure to absolute maximum rating conditions for extended periods may affect reliability.

Low Power Linear Hall Sensor

XL49

XL49 Electrical Characteristics (Note2)

$T_A = 25^{\circ}\text{C}$, $V_{DD}=3.3\text{V}$; system parameters test circuit figure1, unless otherwise specified.

| Parameters | Symbol | Test Condition | Min. | Typ. | Max. | Unit |
|------------------------|--------------|----------------------|-------|------|-------|-----------|
| Operation Voltage | V_{DD} | – | 2.7 | 3.3 | 8 | V |
| Operation Current | I_{DD} | $V_{DD}=3.3\text{V}$ | – | 1.2 | 1.4 | mA |
| Output Load Resistance | R_L | $B=+1000\text{Gs}$ | 20 | – | – | $k\Omega$ |
| Output Voltage Range | $V_{OUT(H)}$ | $B=+1000\text{Gs}$ | 2.45 | 2.5 | – | V |
| | $V_{OUT(L)}$ | $B=-1000\text{Gs}$ | – | 0.8 | 0.85 | V |
| | $V_{OUT(Q)}$ | $B=0\text{Gs}$ | 1.886 | 2.05 | 2.214 | V |
| Linearity | Lin | – | –4 | – | 4 | % |

XL49 Magnetic Characteristics

| Parameters | Symbol | Test Condition | Min. | Typ. | Max. | Unit |
|-------------|--------|--|------|------|------|-------|
| Sensitivity | Sens | $V_{DD}=3.3\text{V}$, $B=\pm 200\text{Gs}$ | 2.0 | 2.2 | 2.4 | mV/Gs |

Output Characteristics

$T_A = 25^\circ\text{C}$, $V_{DD} = 3.3\text{V}$; system parameters test circuit figure1, unless otherwise specified.

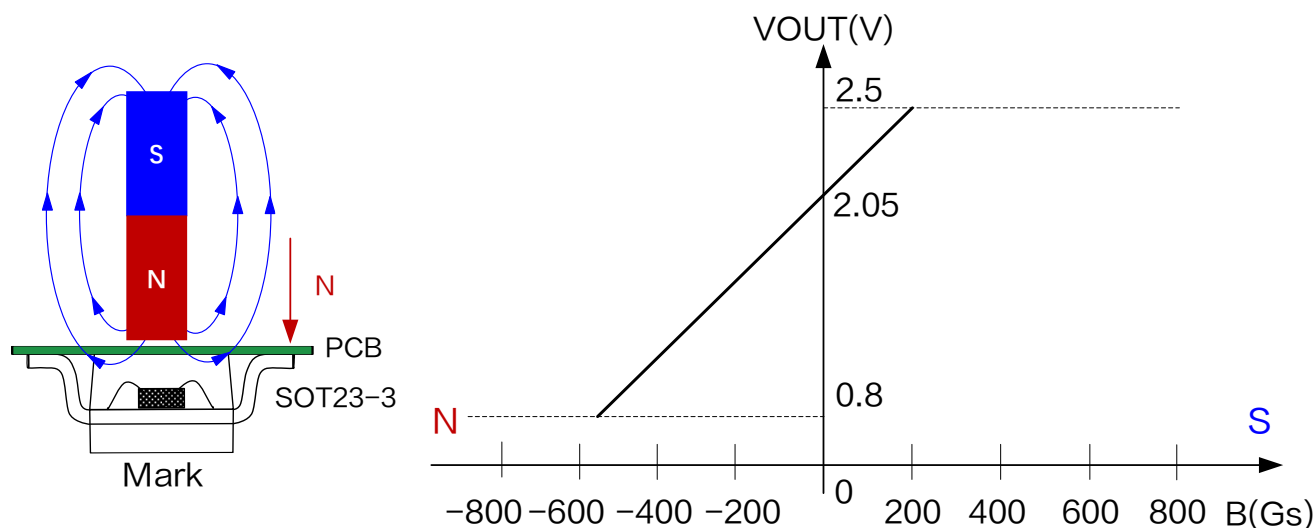


Figure4. XL49 Output characteristic curve

Note2: At room temperature, the maximum output voltage of the chip is $V_{DD} - 0.8\text{V}$, and the minimum output voltage is 0.8V , with a linear range of 1.0V to $V_{DD} - 1.0\text{V}$.

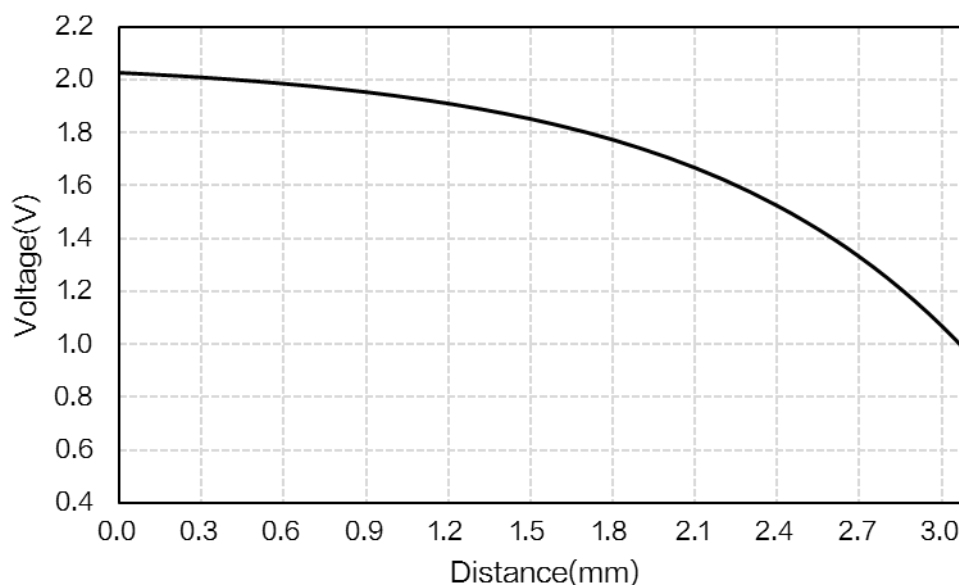


Figure5. Magnetic field axis application curve

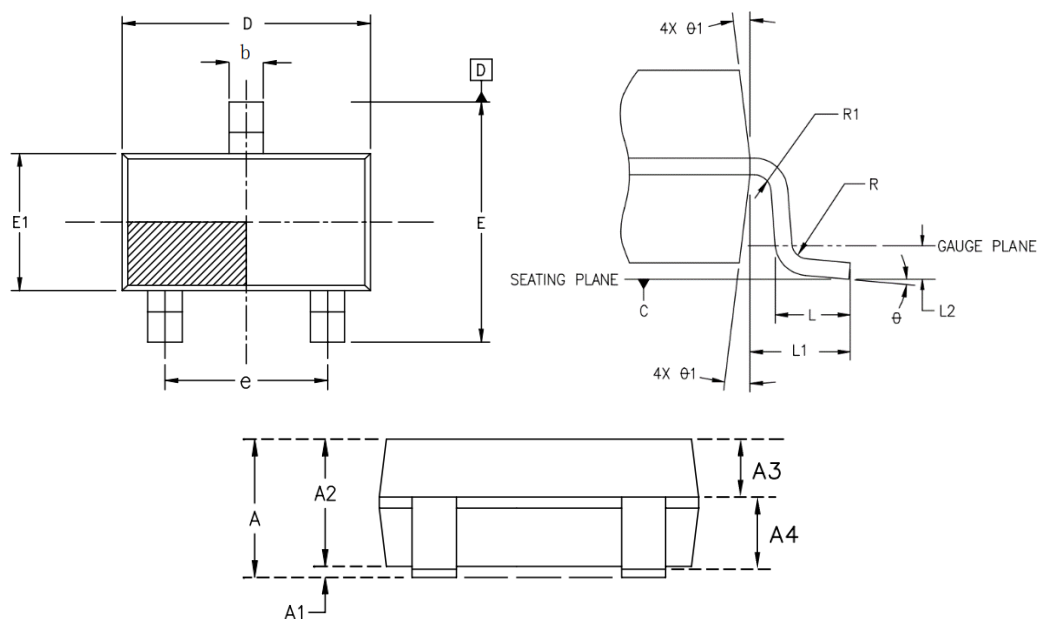
Note3: The test results change depending on the testing method and axis configuration used!

Low Power Linear Hall Sensor

XL49

Package Information

SOT23-3



| Symbol | Dimensions In Millimeters | | Dimensions In Inches | |
|--------|---------------------------|-------|----------------------|-------|
| | Min. | Max. | Min. | Max. |
| A | 1.00 | 1.35 | 0.041 | 0.049 |
| A1 | 0.00 | 0.15 | 0.000 | 0.004 |
| A2 | 1.00 | 1.20 | 0.041 | 0.045 |
| b | 0.30 | 0.50 | 0.012 | 0.020 |
| c | 0.10 | 0.20 | 0.004 | 0.008 |
| D | 2.82 | 3.05 | 0.111 | 0.120 |
| E1 | 1.50 | 1.726 | 0.059 | 0.067 |
| E | 2.60 | 3.00 | 0.104 | 0.116 |
| e | 1.80 | 2.00 | 0.071 | 0.079 |
| L | 0.30 | 0.60 | 0.012 | 0.024 |
| L1 | 0.6REF. | | 0.6REF. | |
| L2 | 0.25REF. | | 0.25REF. | |
| θ | 0° | 8° | 0° | 8° |

Important Notice

XLSEMI reserve the right to make modifications, enhancements, improvements, corrections or other changes without notice at any time. XLSEMI does not assume any liability arising out of the application or use of any product described herein; neither does it convey any license under its patent rights, nor the rights of others. XLSEMI assumes no liability for applications assistance or the design of Buyers' products. Buyers are responsible for their products and applications using XLSEMI components. To minimize the risks associated with Buyers' products and applications, Buyers should provide adequate design and operating safeguards. XLSEMI warrants performance of its products to the specifications applicable at the time of sale, in accordance with the warranty in XLSEMI's terms and conditions of sale of semiconductor products. Testing and other quality control techniques are used to the extent XLSEMI deems necessary to support this warranty. Except where mandated by applicable law, testing of all parameters of each component is not necessarily performed.

For the latest product information, go to www.xlsemi.com.